



A new train of thought

IMPACT
REPORT
2024

The Problem

AFRICA STANDS AT A CROSSROADS – ITS NATURAL WEALTH IS UNDER SIEGE FROM ENVIRONMENTAL CRIME, ECONOMIC INSTABILITY, AND WEAK GOVERNANCE.

The interconnected challenges of poverty and environmental degradation create a precarious dynamic where marginalised communities living near wildlife and wild places often find themselves in proximity to valuable natural resources. With limited opportunities and under-resourced institutions, this situation fosters an environment where organised crime – centred around resource extraction – can thrive.

For many communities facing economic hardships, whether urban or rural, environmental crime becomes a means of survival. However, these actions unintentionally fuel a global black market driven by relentless demand for resources – be it timber, minerals, protein, or animal products. In the pursuit of short-term economic relief, Africa's rich biodiversity is exploited, and impoverished individuals become both contributors to environmental destruction and victims of a criminal enterprise.



This creates a vicious cycle: ecosystems that once sustained life through coexistence are degraded, and communities become further impoverished. Conservation efforts in Africa are further complicated by ideological, political, and legal differences, leading to inconsistent approaches at local, national, and regional levels.

The Cause

DESPITE SUBSTANTIAL INVESTMENT IN CONSERVATION, EFFORTS TO SECURE THE NATURAL WORLD OFTEN FALL SHORT OF DELIVERING LASTING IMPACT.

Funding structures tend to favour organisations with the capacity to navigate complex financial mechanisms, which can lead to a concentration of resources among well-established institutions. Meanwhile, many grassroots organisations – deeply embedded in the landscapes they protect – struggle to access sufficient funding, limiting their ability to scale and sustain their impact.

This imbalance contributes to a fragmented approach to addressing environmental challenges. Scarce resources often result in isolated efforts rather than the collaboration needed to tackle threats at scale. Despite dedicated individuals and existing solutions, systemic barriers prevent them from scaling their impact. Without direct support, these efforts remain fragmented and under-resourced. Additionally, grassroots NGOs often lack the security and backing of large headquarters in Europe or the US. This leaves them vulnerable to financial instability, difficulty in maintaining long-term fundraising capacity, and a lack of resources to respond to emergencies or operational crises. Unlike larger organisations, they may not have dedicated teams for legal support, advocacy, or crisis management, further limiting their ability to sustain their efforts in unpredictable environments.



Furthermore, many African governments face inadequacies in prioritising conservation and addressing wildlife and environmental crimes. Competing demands such as healthcare, education, and economic development often overshadow conservation efforts, placing added pressure on conservation areas and NGOs. These resources are often prioritised in areas of high density and communities around protected areas are often neglected. As a result, conservation organisations are left trying to fill these gaps with limited funding and expertise, making long-term sustainability even more challenging.

THERE IS AN EVER-PRESENT NEED TO SUPPORT THOSE WHO HAVE THE SOLUTIONS AND WORK WITHIN THE CONTEXT OF THE PROBLEM. Grassroots NGOs require both financial and technical support to effectively safeguard landscapes and communities. These organisations are uniquely positioned to drive meaningful change, as they maintain strong relationships with government agencies, communities, and other stakeholders. Their deep local connections enable them to foster unity, trust, align efforts toward shared goals, and implement solutions that are both context specific and sustainable.

Alinea bridges this gap by equipping organisations with the capacity and tools they need to succeed. We de-risk investments into highly effective local entities, ensuring that resources reach the front lines where they are most needed. By supporting locally established, home-grown organisations, we help direct financial support to trusted individuals within governments, strengthening accountability and reducing the risk of mismanagement. This approach ensures that assistance reaches capable and ethical institutions, reinforcing integrity-driven conservation efforts.

Our model promotes collaboration, self-sufficiency, and self-organisation among our partners. By maximising the efficiency and impact of funding, we not only help protect the environment but also support the communities that depend on it.

Alinea works to close the gap between funding and impact. We provide strategic capabilities, reduce risk for donors and partners, and focus on the long-term sustainability of grassroots organisations. Our support extends beyond funding: we offer technical expertise and assistance that enables us to engage a broader network of partners and address environmental crime holistically. Alinea is more than just a funding conduit: it is a transformative force that empowers grassroots NGOs to drive sustainable conservation solutions. By building capacity, fostering partnerships, and aligning efforts across landscapes, we ensure that conservation is not just funded but effectively executed.



Alinea's systems-based approach focuses on the four critical pillars necessary for long-term, landscape-scale conservation success:



How we work

ALINEA TAKES A SYSTEMS-BASED APPROACH to tackling the interconnected challenges of conservation, security, community well-being, and economic sustainability. We recognise that no single intervention can address the complex dynamics driving environmental crime, biodiversity loss, and resource depletion. Instead, a whole-of-landscape model is required – one that strengthens multiple, interdependent factors to build lasting resilience for both people and nature.

Natural security



We bolster the capacity of organisations working to protect wildlife, combat illegal activities like poaching and trafficking, and ensure the safety and security of both people and the environment.

THIS INCLUDES supporting initiatives focused on law enforcement, anti-poaching efforts, and community-based conservation.

Economics



We understand the complex relationship between economic development and environmental sustainability.

We support organisations working to promote sustainable livelihoods, green investment, and responsible resource management.

THIS INCLUDES initiatives that address poverty, create economic opportunities, and promote sustainable practices.

Society



We recognise the critical role of communities in conservation efforts.

We empower organisations working to promote social justice, human rights, and community development.

THIS INCLUDES supporting initiatives that address poverty, improve livelihoods, and promote education and healthcare.

Knowledge and research



We support organisations conducting vital research, gathering data, and sharing knowledge to improve understanding of environmental challenges and identify innovative solutions. Most importantly, we engage directly with those on the ground to understand their challenges, ensuring that solutions are informed by real-world needs and practical realities.

Through this integrated, landscape-level approach, Alinea works with a variety of partners – including grassroots NGOs, governments, and local institutions – to strengthen their capacity and impact. We provide technical expertise, strategic guidance, and funding support to organisations embedded in these landscapes, ensuring that solutions are driven by those closest to the challenges. By enhancing collaboration and coordination among partners, we create cohesive conservation responses that address root causes, rather than just symptoms.

Sustaining impact through innovative financing



EFFECTIVE CONSERVATION REQUIRES LONG-TERM, PREDICTABLE FUNDING, YET TRADITIONAL FINANCIAL MODELS ALONE ARE INSUFFICIENT TO MEET THE SCALE OF THE CHALLENGE.

Local governments face financial constraints, philanthropy remains vital but finite, and relying solely on external donors leaves conservation efforts vulnerable to shifting priorities.

To address this, Alinea is strategically positioning itself to blend multiple forms of conservation finance – ensuring that funding sources are both diverse and sustainable. While we continue to engage philanthropists, governments, and international donors, we are also looking into opportunities to tap into emerging nature finance mechanisms, such as Nature-Based Solutions (NBS), blended finance models, and commercial investments into nature.

New financial opportunities are emerging, particularly through the Global Biodiversity Framework (GBF) and initiatives seeking to channel funds into conservation. Alinea is working to be positioned to turn emerging financial opportunities into real-world conservation impact. By developing viable, high-impact projects that align with both conservation and socioeconomic objectives, we can create a pathway for new investments into African conservation while ensuring resources flow to those best equipped to deliver impact ethically and effectively.

Alinea's approach will work to ensure that conservation, is not only funded, but also financially resilient – reducing reliance on any single funding stream and creating long-term sustainability for grassroots organisations, governments, and conservation partners.



Our Work and Impact

Conservation is more than just protecting wildlife – it is about safeguarding communities, securing ecosystems, and strengthening governance, and Alinea and our partner organisations are leading the way in transforming how conservation is approached across Africa. Over the past year, we have continued to work with frontline organisations to dismantle criminal networks, build resilience in communities, and ensure that conservation efforts deliver long-term impact.

Alinea operates as a regional intermediary, empowering grassroots organisations and conservation partners to amplify their impact. Through strategic collaboration, data driven enforcement, innovative research, and sustainable development initiatives, our collective efforts are driving meaningful change across multiple landscapes. From the forests of the Democratic Republic of Congo to the savannahs of Botswana, and the conservation corridors of Southern Africa, our partners are taking bold steps to protect both wildlife and the people who live alongside them.

Key Areas of Impact:



Combatting Illegal Wildlife Trade: Our partners, including Wildlife Crime Prevention (WCP), Conserv Congo, Mozambique Wildlife Alliance (MWA), and the Conscious Protection and Conservation Association (CPC), have played a pivotal role in working with government agencies to dismantling wildlife trafficking syndicates, strengthening judicial processes, and advancing policy reforms that hold criminals accountable.



Strengthening Law Enforcement & Security: Working alongside law enforcement agencies, these organisations have supported information-led investigations, increased conviction rates for wildlife crime, and improved cross-border cooperation to combat organised crime. From tools to building the capacity of rangers, our efforts have reinforced the rule of law in conservation landscapes.



Enhancing Community-Led Conservation: Initiatives such as CLAWS' lion alert system in Botswana, GKEPF's community liaison programmes in South Africa, MWA's elephant-human coexistent work and KCP's predator-proof kraals in Namibia have strengthened human-wildlife coexistence. Through livelihood projects, education programmes, and behavioural change campaigns, our partners are ensuring that conservation benefits local communities.



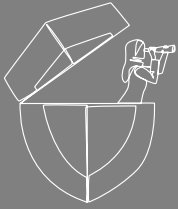
Advancing Research & Innovation: Alinea has supported conservation science through data-driven technologies such as Cortex Edge, Earth Ranger, and GIS platforms. These tools have empowered partners to monitor ecosystems, track criminal networks, and improve decision-making processes.



Securing Conservation Landscapes: Through our Landscape Security Programme, we have provided structured support to partners in identifying and mitigating security threats. This has included risk assessments, operational support, and strengthening collaboration between conservation organisations and law enforcement agencies.



Promoting Gender & Social Inclusion: Recognising that conservation cannot succeed without addressing broader societal challenges, Alinea and our partners have actively supported female and local leadership in conservation, promoted economic empowerment for rural women, and worked to address gender-based vulnerabilities that drive environmental crime.



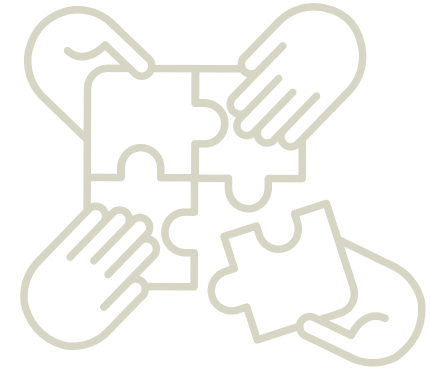
Looking ahead

Alinea remains committed to expanding the reach and effectiveness of conservation initiatives. We will continue to strengthen partnerships, advance policy engagement, and support innovative solutions that ensure Africa's conservation efforts are sustainable and impactful in the long term.

The successes of this past year would not have been possible without the unwavering dedication of our partners, the commitment of local communities, and the support of our donors and strategic allies.

As we move forward, we remain steadfast in our mission – to create a future where conservation is integrated into governance, economic resilience, and community well-being, ensuring that Africa's landscapes, wildlife, and people thrive together.

 Mozambique Wildlife Alliance (MWA)



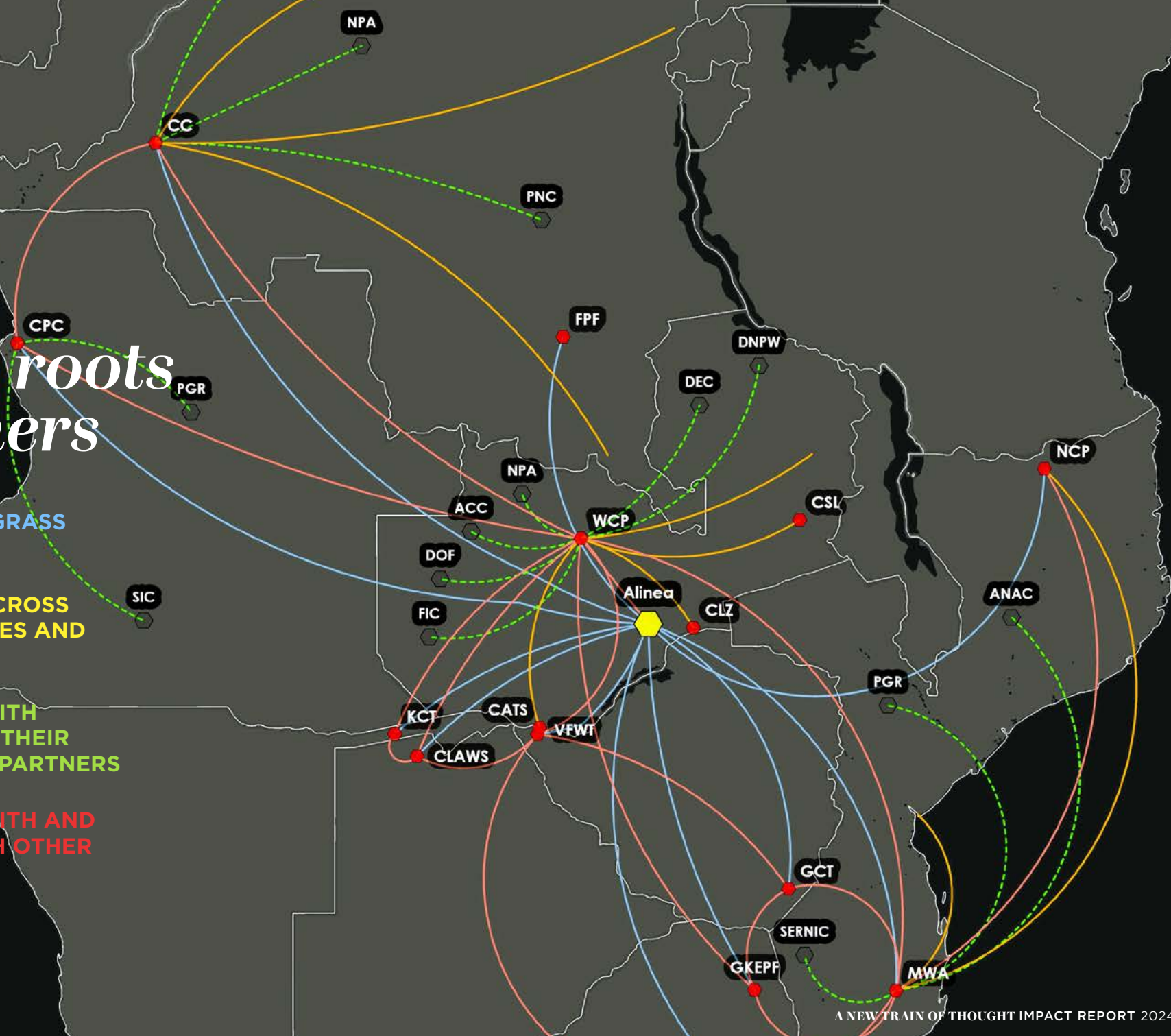
Our grassroots partners

WE SUPPORT GRASS
ROOTS NGO'S

WHO WORK ACROSS
VAST COUNTRIES AND
LANDSCAPES

WHO WORK WITH
AND SUPPORT THEIR
GOVERNMENT PARTNERS

WHO WORK WITH AND
SUPPORT EACH OTHER





ZAMBIA

Wildlife Crime Prevention (WCP):

ENHANCING CONSERVATION EFFORTS IN ZAMBIA

Wildlife Crime Prevention (WCP), is at the forefront of efforts to combat environmental crime in Zambia, working in close collaboration with government institutions, law enforcement agencies, and conservation partners. Unlike traditional conservation models, WCP takes a strategic, data driven approach that targets the organised criminal networks driving wildlife and forestry crime. By integrating law enforcement support, policy advocacy, community engagement, and research-driven solutions, WCP is not only protecting species but also strengthening governance, securing ecosystems, and creating safer communities.

WCP's impact spans multiple sectors:



Law Enforcement & Data Management: Strengthening government capacity to detect, investigate, and prosecute environmental crime, using information-sharing, financial investigations, and inter-agency collaboration to dismantle trafficking networks.



Criminal Justice & Policy Advocacy: Supporting prosecutions, legal reforms, and policy development to ensure stronger deterrents for environmental crime while fostering regional and international cooperation.



Community Awareness & Behaviour Change: Running targeted campaigns such as *This Is Not a Game* to reduce demand for illegal wildlife products, promote sustainable livelihoods, and educate the public on the risks of environmental crime.



Scientific Research & Innovation: Partnering with academic institutions and conservation organisations to improve understanding of emerging threats, enhance enforcement strategies, and develop data-driven solutions, such as predictive analytics and crime mapping.



Cross-Border & Regional Impact: Expanding WCP's reach beyond Zambia through collaborative initiatives that disrupt transnational criminal syndicates and strengthen conservation efforts across Southern Africa.

Guided by principles of conservation, innovation, collaboration, integrity, and sustainability, WCP is redefining how conservation and law enforcement intersect. By addressing the root causes of wildlife and forestry crime, WCP is creating lasting change – ensuring that conservation is not just about protecting wildlife but about securing Zambia's future for generations to come.

For more information, visit:





MOZAMBIQUE

Mozambique Wildlife Alliance (MWA):

STRENGTHENING CONSERVATION THROUGH A MULTI SYSTEMS APPROACH

Mozambique Wildlife Alliance (MWA) is a leading conservation organisation dedicated to combatting illegal wildlife trade (IWT), mitigating human-wildlife conflict, and strengthening conservation efforts across Mozambique. Since its inception in 2021, MWA has grown from a small team to a nationwide operation, working alongside government institutions, private organisations, and conservation partners to provide pragmatic, field-based solutions that secure ecosystems, protect wildlife, and support local communities.

MWA's work is structured around four key pillars:



Wildlife Veterinary Support: Providing high-quality veterinary interventions across Mozambique's protected areas, treating over 1,000 animals in 2024 alone.



Human-Wildlife Conflict Mitigation: Implementing eight multi-layered livelihood projects in high-conflict areas, focusing on food security, health, and social development to promote coexistence between communities and wildlife.



Advisory Support for Conservation: Partnering with judicial authorities, district leaders, and conservation agencies to develop and implement sustainable conservation policies and governance frameworks.



Illegal Wildlife Trade Disruption: Deploying a dedicated team of investigators, analysts, and legal experts to dismantle trafficking networks, prosecute wildlife criminals, and support law enforcement institutions.

With a strong foundation of collaboration, adaptability, and government partnerships, MWA continues to play a crucial role in ensuring that Mozambique's natural heritage is safeguarded for future generations. By integrating conservation science, law enforcement, and community development, MWA is not only protecting wildlife but also strengthening governance and building resilient ecosystems where people and nature can thrive together.

MWA's impact has been transformative:

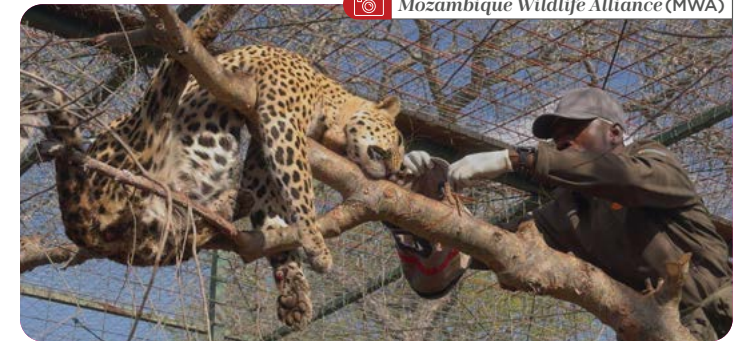
Established two operational hubs in Central Mozambique and Niassa, ensuring a strategic presence in key conservation landscapes.

Supported conservation initiatives covering 80% of Mozambique's protected area network, reinforcing ecological integrity and wildlife protection.

Led community-centred conservation platforms in 30 districts, strengthening local engagement and conservation leadership.

Provided legal and investigative support to disrupt wildlife trafficking syndicates, resulting in high-profile convictions, including a 30-year sentence for a major wildlife trafficker in 2024.

Dismantled eight gin trap manufacturing sites, removing over 231 gin traps and significantly reducing threats to Mozambique's carnivore populations.



Mozambique Wildlife Alliance (MWA)



Alinea



Mozambique Wildlife Alliance (MWA)

For more information, visit:


 Greater Kruger Environmental Protection Foundation (GKEPF)

SOUTH AFRICA

Greater Kruger Environmental Protection Foundation (GKEPF):

STRENGTHENING CONSERVATION THROUGH COLLABORATION

The Greater Kruger Environmental Protection Foundation (GKEPF) is a collaborative security and conservation initiative working across the Greater Kruger ecosystem. By supporting law enforcement, strategic communication, and community engagement, GKEPF plays a vital role in protecting the region's biodiversity, mitigating wildlife crime, and fostering sustainable relationships between reserves and surrounding communities. Through its partnerships with government agencies, private reserves, and conservation organisations, GKEPF ensures a cohesive, landscape-wide response to environmental threats.



Impact Over the Last Year:

Wildlife Crime Prevention & Law Enforcement Support



Information Sharing and Reporting: GKEPF produces and distributes monthly crime reports to reserve managers, law enforcement partners, and conservation stakeholders, facilitating coordinated decision-making across the landscape.



Rhino Rewilding and Rewilding Communication Strategy: Initiated and coordinated a rhino rewilding programme within the landscape and developed a unified media protocol, press releases, and a Q&A guide for stakeholders, ensuring accurate and consistent messaging on rhino translocations in the region.



Training: Provided legal training on law enforcement parameters and financial literacy training to address the underlying drivers of involvement in wildlife crime.



Community-Led Conservation Initiatives

Sports Programme: Engaged 119 youth sports teams in communities bordering Greater Kruger, providing a positive alternative to crime and reinforcing connections with conservation areas.

High School Conservation Debate Programme: Hosted an environmental debate competition for 12 schools, encouraging critical thinking and youth engagement on wildlife conservation issues.

Career Guidance Days: Provided over 1,000 high school students with career insights and tertiary education opportunities, reducing vulnerability to illegal wildlife trade (IWT) through alternative livelihoods.

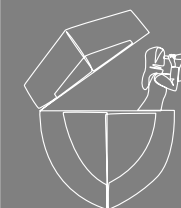
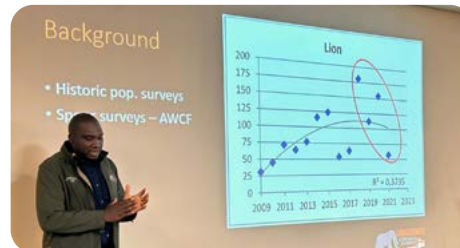
Rangers' Kids Wilderness Experience: Facilitated an immersive nature camp for the children of rangers, strengthening their understanding of conservation and appreciation for their parents' work.

Research & Community Perception Studies

Rhizome Landscape Survey: Conducted 2,500 community surveys to assess perceptions of wildlife, rhino poaching, and bushmeat hunting, informing future community engagement strategies.

Village Leaders' Interviews on Bushmeat Poaching: Consulted traditional leaders to gain insights into the bushmeat trade's drivers and advocate for stronger community-based interventions.

Greater Kruger Environmental Protection Foundation (GKEPF)



Looking ahead

GKEPF remains committed to strengthening law enforcement partnerships, expanding community engagement programmes, enhancing communication strategies to combat wildlife crime and promote coexistence.

Moving into 2025, GKEPF aims to:

Expand youth conservation programmes to deepen environmental education and mentorship opportunities.

Strengthen cross-border information sharing to support the disruption of regional trafficking networks.

Increase community-based alternative livelihood projects to reduce dependency on illegal activities.

By integrating conservation security, community-driven solutions, and strategic communication, GKEPF is ensuring that the Greater Kruger ecosystem remains protected and resilient for future generations.

For more information, visit:





DEMOCRATIC
REPUBLIC OF
CONGO

Conserv Congo :

COMBATting ILLEGAL WILDLIFE
TRADE IN THE DRC

For over a decade Conserv Congo has played a pivotal role in wildlife protection and conservation across the Democratic Republic of Congo (DRC) and neighbouring countries. Founded in 2013 and formally registered in 2017, the organisation has taken a proactive approach to tackling IWT through information-led investigations, legal support, social impact initiatives, and community awareness efforts.

Conserv Congo operates in one of the most complex conservation landscapes in Africa, where significant levels of wildlife crime, violence and instability threaten biodiversity and local livelihoods. By collaborating with government agencies, judicial authorities, and international conservation partners, the organisation has strengthened enforcement mechanisms, disrupted transnational trafficking networks, and advanced legal accountability for wildlife crimes.

Strengthening Enforcement and Legal Action

Conserv Congo's law enforcement work has been instrumental in dismantling key wildlife trafficking operations. In recent years, the organisation has:



Disrupted major IWT networks, including high-profile seizures of ivory, pangolin scales, okapi skins, and live apes, leading to the arrest and prosecution of wildlife traffickers.



Strengthened judicial case tracking, ensuring that wildlife crime cases progress through the legal system with increased conviction rates and deterrent sentencing.



Collaborated on cross-border enforcement efforts, targeting transnational wildlife crime syndicates operating between the DRC, Burundi, Uganda, and Tanzania.

Conservation Impact

Through strategic interventions and information-sharing, Conserv Congo has significantly contributed to wildlife protection:

Provided technical support leading to 24 individuals apprehended, including key suspects linked to international smuggling operations.

Supported 13 major wildlife confiscations, including 10 ivory cases (which involved okapi skins and a leopard skin), 2 pangolin-related seizures, and 1 chimpanzee rescue.

Strengthening work with the judiciary led to 6 convictions in 3 cases, including successful prosecutions of traffickers.

Continued work to counter the Ivory trade, supporting 19 arrests and over 2.7 tonnes of ivory seized (including a single seizure of 1,414 kg), with a focus on dismantling well-established trafficking routes.

Expanded Support for Live Animal Trafficking Cases, reinforcing protections for species such as chimpanzees and other endangered primates.

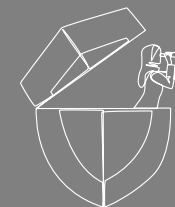
Organisational Growth and Capacity Building

Conserv Congo continues to invest in institutional development and governance to enhance its long-term effectiveness. Key milestones include:

First external financial audit completed in February 2024, demonstrating commitment to transparency and strengthening donor confidence.

Expanded collaboration with law enforcement agencies, including training and capacity-building initiatives aimed at enhancing information gathering, prosecution support, and legal advocacy.

Ongoing efforts to formalise the legal status of Conserv Congo agents, enabling them to act as judicial officers in wildlife crime investigations.



Looking ahead

As wildlife crime networks evolve, Conserv Congo remains committed to adapting and expanding its conservation efforts.

Strategic priorities for the future include:

Target-led investigations to disrupt trafficking networks and enhance cross-border enforcement collaboration.

Judicial reform and legal advocacy to close loopholes in wildlife crime legislation and ensure stronger penalties for offenders.

Enhanced law enforcement training to equip officers with the tools and resources needed to tackle IWT more effectively.

Adapting to rising conflict and instability in key operational areas by integrating risk management and alternative enforcement strategies.

Community engagement and awareness initiatives to reduce reliance on IWT and promote alternative livelihoods.

Strengthening financial sustainability through diversified funding sources, strategic partnerships, and continued governance improvements.

For more information, visit:

By reinforcing enforcement action, increasing legal accountability, and engaging local communities, Conserv Congo is creating a lasting impact in the fight against illegal wildlife trade. Its work not only protects endangered species but also strengthens governance, promotes stability, and supports conservation efforts across the DRC and beyond.

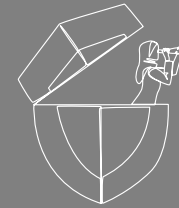


ZIMBABWE

Gonarezhou Conservation Trust (GCT):

STRENGTHENING WILDLIFE PROTECTION THROUGH DATA-LED AND LAW ENFORCEMENT OBJECTIVES

Gonarezhou Conservation Trust (GCT) is at the forefront of conservation efforts in Zimbabwe's Gonarezhou National Park (GNP), working to combat wildlife crime, enhance law enforcement capacity, and support judicial processes. Despite a challenging year due to economic instability and drought-driven poaching, GCT's information-led approach has remained highly effective in protecting key species and deterring criminal networks.



Looking ahead

GCT remains committed to expanding information-led enforcement, strengthening judicial processes, and adapting conservation strategies to counter emerging threats. Moving into 2025, the focus will be on enhancing operations, improving legal frameworks for tougher sentencing, and increasing ranger support to ensure continued protection of Zimbabwe's biodiversity.

Wildlife Crime Prevention & Law Enforcement Support



Information-led Operations: Conducted 87 information-based operations, resulting in 127 arrests, significantly disrupting poaching and illegal wildlife trade (IWT) activities in and around GNP.



Protection of Key Species: Maintained zero rhino poaching in GNP, though four elephants were poached—two inside the park and two near the Mozambique border.



Joint Law Enforcement Operations: Partnered with ZIMPARKS, the Mineral Flora and Fauna Unit (MFFU), and the Zimbabwe Republic Police (ZRP) to conduct 53 joint operations, providing manpower, information, and logistical support.



Tactical & K9 Support: Assisted law enforcement in high-risk operations, including the capture of armed robbers, by providing transport, K9 units, and operational guidance.

Judicial & Legal Support

Court Monitoring & Legal Advocacy: The GCT Court Case Monitor attended 50 court hearings, ensuring cases were effectively prosecuted and justice was served.

Conviction Rates & Challenges: Achieved an 81% conviction rate (82/102 convictions), slightly below the 90% target, due to procedural challenges with new magistrates and case separations.

Judicial Engagement: Hosted magistrates and prosecutors inside GNP to familiarise them with conservation enforcement challenges, leading to improved prosecution of wildlife crime cases.

Capacity Building & Operational Enhancements

Specialised Training: Conducted advanced information gathering training, first aid courses, and Earth Ranger system training, equipping rangers with critical field skills.

Recruitment & Data Management: Hired a GIU Data Clerk to enhance information data capture, security, and operational efficiency.

Improved Field Reporting: Piloted Earth Ranger Mobile to transition from manual reporting to real-time digital tracking for law enforcement operations.

Community & Socioeconomic Challenges

Increase in Subsistence Poaching: Economic hardship and drought conditions have led to a rise in small-game and fish poaching, increasing pressure on enforcement teams.

Ineffective Sentencing: Community service sentences for subsistence poachers have proven ineffective, with high rates of reoffending, necessitating stronger legal deterrents.

For more information, visit:


 **Conscious Protection and Conservation Association (CPC)**

Conscious Protection and Conservation Association (CPC):

STRENGTHENING ANGOLA'S RESPONSE TO ILLEGAL WILDLIFE TRADE

ANGOLA

The Conscious Protection and Conservation Association (CPC)

is at the forefront of countering IWT in Angola, working in close partnership with government agencies to enhance enforcement, policy reform, and capacity building. Officially registered in 2023, CPC has leveraged its strong governmental and institutional relationships to accelerate national efforts in tackling wildlife crime. Through strategic interventions, legislative advocacy, and multi-sectoral training, CPC is supporting the Angolan Government in driving systemic change to combat IWT effectively.



Strengthening Legislative and Enforcement Frameworks

CPC has played a pivotal role in fostering collaboration between law enforcement agencies, the judiciary, and conservation partners to address wildlife crime in Angola.

Key developments include:



High-Level Strategic Engagement: Facilitated a multi-agency meeting in 2024, bringing together the lead government judicial and law enforcement agencies to enhance coordination on wildlife crime enforcement.



Legislative Reform Initiatives: Supported the ongoing development of a Legislative Strategic Plan for Environmental Conservation, aimed at strengthening legal frameworks around IWT and other related environmental crimes.



Cross-Sectoral Training: Organised three multi-sectoral workshops on wildlife crime scene response, evidence handling, and prosecution strategies, reaching over 80 participants from law enforcement, judiciary, customs, and environmental agencies.

Conservation and Enforcement Impact

CPC's interventions have directly contributed to improved enforcement outcomes and legal accountability for wildlife crimes:

CPC's interventions have directly contributed to improved enforcement outcomes and legal accountability for wildlife crimes. Key priorities include:

Enhanced inter-agency coordination, fostering improved information-sharing and operational collaboration.

Supporting the finalisation of the Legislative Strategic Plan and supporting its implementation through continued policy engagement.

Expanding specialised training for law enforcement and judicial personnel to ensure effective prosecution of wildlife crimes.

Formalised government partnerships, including agreements with the judiciary to expand enforcement and case tracking mechanisms.

Supporting the establishment and supporting a dedicated unit to centralise enforcement efforts and improve case coordination.

Increasing public awareness campaigns to promote the importance of wildlife conservation and discourage involvement in IWT.

Advanced capacity-building efforts, equipping law enforcement and judicial actors with the necessary knowledge and skills to address IWT more effectively.

Supporting the development of national wildlife crime and prosecution databases to enhance legal tracking and accountability.

Strengthening cross-border collaboration, supporting the reinforcement of Angola's role in regional enforcement against transnational wildlife crime networks.

By leveraging strong governmental partnerships, data driven enforcement strategies, and targeted legislative reforms, CPC is playing a critical role in transforming Angola's approach to wildlife crime. With sustained efforts in governance, capacity building, and community engagement, this work is ensuring that Angola's wildlife and natural heritage are safeguarded for generations to come.

For more information, visit:





BOTSWANA

 Alexandra Carrache (CLAWS)

Communities Living Among Wildlife Sustainably (CLAWS):

ADVANCING HUMAN-WILDLIFE COEXISTENCE IN BOTSWANA

Communities Living Among Wildlife Sustainably (CLAWS) is dedicated to fostering coexistence between people and wildlife, particularly lions, across Botswana's Kavango-Zambezi Transfrontier Conservation Area (KAZA TFCA). By integrating traditional herding techniques with modern conservation technology, CLAWS works directly with communities to reduce human-wildlife conflict (HWC), improve livelihoods, and ensure the long-term survival of Botswana's lion populations.

Strengthening Conservation through Innovation and Community Engagement

CLAWS has pioneered solutions that merge technology with traditional methods to protect both livestock and wildlife.

Some of the organisation's key initiatives include:



The Lion Alert System (LAS): A satellite-based automated early warning system that tracks lions and alerts farmers when they approach cattle posts, enabling proactive conflict prevention. Since its implementation, no lion poisoning incidents have been recorded since 2019.



Communal Herding Programme: CLAWS has expanded its innovative Ecoranger-led livestock herding model, ensuring safer grazing practices that protect livestock while reducing retaliatory lion killings. In 2024, CLAWS successfully engaged Beetsha Village in developing a communal herd, with 1,000 cattle pledged and herders being trained to manage them sustainably.



Safe Passage Initiative: CLAWS has initiated cross-border conservation efforts to monitor lion dispersal routes between Botswana and Namibia, contributing critical data to conservation planning and wildlife corridor protection. Camera traps have confirmed the movement of at least four lions across borders, with tracking data shared between conservation teams in both countries.



Legislative and Policy Engagement: CLAWS has been actively involved in discussions with the Botswana and Namibian governments regarding the removal of 75 km of border fence and 65km of buffalo fence, to re-establish historic migratory routes for elephants and other wildlife.



 Andy Maano (CLAWS)

Conservation and Livelihood Impact

By addressing the root causes of human-wildlife conflict, CLAWS has delivered tangible benefits to both communities and conservation efforts:

One lion killing in Beetsha in the past two years, despite ongoing conflict.

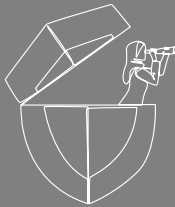
18% increase in cattle sale prices for farmers participating in CLAWS' Wildlife-Friendly Beef programme.

Known lion population has increased from 45 to 108 in two years from increased data collection and stable prides producing over 40 surviving cubs in the last two years.

Training of new Ecorangers to manage livestock herds, combining predator deterrence with improved rangeland health.

Over 700 cattle integrated into communal herding programmes, with an additional 1,000 pledged for expansion.

Veterinary outreach initiatives, including disease workshops and livestock health interventions, providing critical support to farmers.



Looking ahead

With growing community interest and government engagement, CLAWS is poised to scale up its conservation efforts.

Key priorities for the future include:

- Scaling up communal herding programmes to include additional villages in the northern Okavango region.
- Expanding the Lion Alert System to monitor more dispersal corridors and improve proactive conflict mitigation.
- Strengthening cross-border collaboration between Botswana and Namibia to ensure the protection of transboundary lion populations.
- Further integrating local communities into conservation initiatives through training, governance structures, and sustainable livelihood opportunities.
- Advocating for fence removal and wildlife corridor restoration, reinforcing ecological connectivity in the KAZA TFCA.



By combining traditional knowledge, cutting-edge conservation tools, and community-led solutions, CLAWS is demonstrating that peaceful coexistence between people and lions is possible. Through strategic partnerships and sustained engagement, CLAWS continues to make a significant impact in reducing conflict, securing livelihoods, and protecting Botswana's iconic lion populations.

For more information, visit:



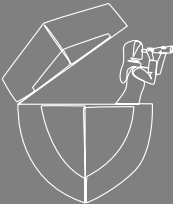


SOUTH AFRICA

IQ Wild:

**STRENGTHENING ECOSYSTEM PROTECTION
AND COUNTERING ORGANISED CRIME IN
MAPUTALAND**

IQ Wild operates in partnership with the Tembe Traditional Authority (TTA) to enhance ecosystem protection and counter transnational organised crime, including IWT, in Maputaland, northern Kwa-Zulu-Natal – a region historically used as a smuggling corridor between eSwatini, Mozambique, and South Africa. Through information-led approaches, community engagement, and economic alternatives, IQ Wild is working to build resilience and promote sustainable development.



Looking ahead

IQ Wild is focused on expanding the community-based systems and frameworks, including capacitating the TTA to enhance crime prevention, scaling up biodiversity enterprises to drive local economic development, strengthening cross-border enforcement partnerships to disrupt transnational crime, and working towards integrating advanced surveillance technology to improve information-led interventions.

Key Achievements in 2024 include:



The Ecosystems Protection Project has worked to strengthen community-based reporting networks, work towards improving law enforcement coordination, with the aim of increasing actionable responses to wildlife crime.



Develop sustainable livelihood initiatives, including advancing the Lake Sibayi Game Reserve (3,000 ha) development, integrating agri-wildlife, eco-tourism, and bioprospecting to provide economic alternatives to IWT.



Supported the development of community-based protection units, working towards enhancing their ability to counter IWT and convergent crimes while safeguarding biodiversity enterprises.





ZIMBABWE

Victoria Falls Wildlife Trust (VFWT):

ADVANCING CONSERVATION AND
COMMUNITY DEVELOPMENT IN ZIMBABWE

Victoria Falls Wildlife Trust (VFWT) has been committed to conservation, community empowerment, and wildlife crime prevention in northwest Zimbabwe since 2008. By integrating conservation science, community engagement, and cross-border collaboration, VFWT works to ensure the long-term sustainability of Zimbabwe's ecosystems while addressing human-wildlife conflict, IWT, and livelihood development.

Key Achievements in 2024 :

Strengthening Wildlife Protection and Law Enforcement



Supporting ZimParks Investigators: VFWT has facilitated improved cross-border collaboration between ZimParks and Zambia's Department of National Parks and Wildlife (DNPW). This has resulted in increased information-sharing, leading to arrests of IWT traffickers and improved case coordination.



Providing essential yet overlooked resources to enable law enforcement outcomes, including printers, fuel, and internet access to ZimParks and Zimbabwe Republic Police (ZRP) Minerals, Flora and Fauna Unit (MFFU) to enhance casework efficiency and field response. These resources have directly supported snare removals, bushmeat poacher arrests, and rapid incident responses.



VFWT has contributed to extended patrols in the Zambezi and Chamabondo areas, assisting ZimParks in wildlife crime investigations and human-wildlife conflict mitigation.

Community Engagement and Sustainable Livelihoods

Financial Literacy and Agribusiness Training: VFWT trained 20 rural women farmers on financial literacy, agribusiness, and value chain development, equipping them with skills to improve economic resilience and market access.



Professional Herder Training: VFWT participated in Herding for Health (H4H) training, focusing on low-stress livestock management, rangeland restoration, and predator-friendly farming. This initiative aims to reduce retaliatory killings of carnivores and improve livestock health while promoting sustainable grazing.



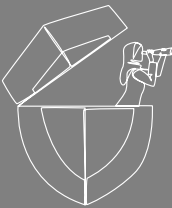
Victoria Falls Wildlife Trust (VFWT)

Advancing Forensic and Investigative Capacity

Wildlife Forensics Expansion: VFWT is working to establish a formal partnership with ZRP Technical Division to scale forensic investigations nationwide. The team has assisted in analysing significant ivory seizures in Mozambique to track illegal trade routes.



VFWT is advocating for targeted training for ZRP MFFU investigators to strengthen evidence collection, chain of custody, and prosecution support, ensuring higher conviction rates for wildlife crimes.



Looking ahead

- VFWT's future priorities include:
- Securing a data analyst position to enhance case tracking and information management in support of counter IWT efforts.
 - Expanding forensic capacity to combat IWT more effectively.
 - Scaling financial literacy and agribusiness programmes to reach more rural women.
 - Strengthening transboundary collaboration with Zambia and other regional partners.
 - Working with ZimParks to provide support for improved security of Zambezi National Park through capacity building, operational support, and enhanced technology.

Through its holistic approach to conservation, law enforcement support, and community engagement, VFWT is making a measurable impact in protecting Zimbabwe's wildlife and enhancing livelihoods.

For more information, visit:



NAMIBIA

Kwando Carnivore Project:

RESTORING LARGE CARNIVORE POPULATIONS IN THE CENTRAL KAZA LANDSCAPE

Operating in the Mudumu Landscape of the Zambezi Region, the Kwando Carnivore Project (KCP) is a long-term initiative focused on the recovery and monitoring of large carnivores in northeast Namibia's within KAZA. Through a combination of research, conservation action, and community engagement, KCP works to restore predator populations, mitigate HWC, and strengthen transboundary wildlife connectivity.

Key Achievements in 2024:



Predator-proofing Livestock Kraals: Ten lion-proof kraals were prepared to mitigate conflict, with construction planned for early 2025. Over the past ten months, no lion attacks on livestock have been recorded in target areas due to Lion Ranger patrols and a geofencing alert system that warns communities of nearby lions.



Wildlife Recovery: Lion numbers have increased from 33 to 44 individuals, marking the first signs of population recovery in six years. The return of plains zebras, common impalas, and giraffes – thriving around newly upgraded waterholes – has also contributed to reduced predator-livestock conflicts.



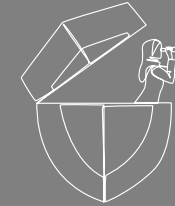
Expanding Water Access: Successfully tested solar-powered lithium-ion water systems in three waterholes, reducing elephant pressure and improving access for other wildlife. Based on this success, six additional solar water systems are being installed with support from other funders.



Transboundary Conservation: Continued efforts to remove sections of the Namibia-Botswana border fence to restore historic migratory routes for elephants and other large mammals. KCP has provided data for a disease risk assessment to facilitate this process.



Community-Based Conservation: Hired six Lion Rangers and 16 additional community members to maintain water sources and assist in conservation activities. The Lion Ranger Programme is preserving traditional tracking skills while enhancing local pride and ownership in conservation efforts.



Looking ahead

KCP is focused on:

Expanding predator-proof kraals to protect more livestock and reduce retaliatory killings.

Strengthening partnerships to scale up lion protection in Ngamiland, Botswana.

Further supporting the Lion and Rhino Ranger programmes, integrating traditional skills with conservation science.

Advocating for fence removal to restore migration corridors and strengthen transboundary collaboration.

Enhancing community engagement to ensure sustainable human-wildlife coexistence.

By linking wildlife recovery with human well-being, KCP is fostering long-term ecological and socioeconomic resilience in central KAZA. Its work is a model for integrating conservation, community livelihoods, and regional cooperation to secure the future of large carnivores in Namibia and beyond.

For more information, visit:



Alinea Projects

TECHNOLOGY AND TECHNICAL SUPPORT

THE FOLLOWING TOOLS AND PLATFORMS – Cortex Edge, GIS, Earth Ranger, SMART, Tableau, and others – are internationally recognised technologies developed and owned by their respective organisations/companies. Alinea does not own, develop, or have any formal affiliation with these products, nor does it receive any financial benefit from their use.

These technologies are critical in advancing conservation efforts. Alinea provides technical support, integration, and optimisation services to enhance their functionality and ensure they are effectively implemented within conservation initiatives. This includes capacity building, customisation, and alignment with specific operational needs. Additionally, Alinea facilitates interoperability between Earth Ranger and Cortex Edge, enabling improved data integration and analytical capabilities.



Close collaboration with the developers of Earth Ranger and Semantic AI (Cortex Edge) ensures that conservation practitioners can maximise the effectiveness of these tools. Alinea's role is to support the implementation and application of these solutions, ensuring they contribute meaningfully to conservation outcomes.

CORTEX EDGE

Cortex Edge, developed by Semantic AI, is a data analysis application that enables analysts to integrate various data sources, identify relationships, and generate insights through visualisation and analytics.

Alinea facilitates capacity building, support, and implementation workshops to help partners effectively use Cortex Edge for data-driven decision-making.

Supported its deployment in



enhancing operational effectiveness in asset deployment within protected areas.

EARTH RANGER

EarthRanger is an open-source software used to monitor, collect, and manage live assets, enabling real-time visualisation of incidents in relation to tracked assets like vehicles or personnel.

Alinea provides support, capacity building, and configuration assistance for partners requiring EarthRanger installation and optimisation.

Supported deployment in



enhancing operational effectiveness in asset deployment within protected areas.

ESRI / GIS

GIS software enables analysts to interrogate spatial data, create visual maps, and support decision-making processes and reporting.

Alinea provides support and capacity building for partners using both ESRI (licensed) and QGIS (open-source) solutions.

Supported



SMART

SMART (Spatial Monitoring and Reporting Tool) is an open-source software designed for conservation areas to collect, store, and manage data in a standardised format.

Alinea provides training and support to partner organisations on structuring, implementing, and using SMART effectively.

Supported deployment in



enabling effective data collection in disconnected environments.

GOOGLE WORKSPACE

Google Workspace provides a suite of tools for document storage, communication, and collaboration, serving as Alinea's primary document management system.

Alinea supports partners in adopting and optimising Google Workspace by guiding implementation, structuring workflows, and training users.

Engaged with



enhancing digital collaboration and efficiency.

TABLEAU

Tableau, previously provided to EarthRanger users as a dashboard and reporting tool, was supported until February 2025.

Alinea developed and deployed multiple dashboard templates while building partner capacity for effective reporting.

Supported



in dashboard use and data visualisation.

STRATEGIC COMMUNICATIONS:

 ALINEA

Amplifying the voice of conservation

AT ALINEA, WE UNDERSTAND THE POWER OF STRATEGIC COMMUNICATIONS in shaping narratives, influencing policy, and enhancing public understanding of conservation's critical role. We are developing a multi-faceted approach to ensure our partners' work reaches key audiences – from local communities and government stakeholders to the international stage.



Our strategic communications efforts are designed to provide conservation organisations with a clear, compelling voice that drives engagement, support, and action.

1. Conservation Partner Communications Programme

Alinea is developing a Conservation Partner Communications Programme to help our partners effectively communicate their impact. This initiative focuses on developing and executing strategic communications plans that elevate the visibility of conservation efforts, engage key audiences, and disrupt environmental crime networks.

Through this programme, we will provide:



Audience-Centred Messaging: Crafting clear, impactful messages tailored to local communities, government entities, and international stakeholders.



Multi-Platform Content Development: Producing high-quality print, digital, and multimedia content that resonates with target audiences.



Community Engagement Strategies: Enhancing outreach efforts to ensure conservation messages are effectively received and acted upon by local communities.



Capacity Building: Training partner organisations on best practices in communication, storytelling, and media engagement.



Behaviour Change Communication: Leveraging social marketing principles to encourage conservation-positive behaviours among key populations.

This programme is available for conservation partners seeking to enhance their outreach and effectively communicate their work to a broader audience.

2. Government Engagement and Conservation Awareness Initiative

Alinea is designing a Government Engagement and Conservation Awareness Initiative, designed to ensure policymakers and government officials fully understand the vital contributions of conservation to economic development, community well-being, and national resilience.

This initiative focuses on:



High-Level Advocacy: Engaging senior political leaders in discussions about the economic and social benefits of conservation.



Data-Driven Policy Briefings: Providing evidence-based insights that highlight the financial contributions of conservation to national economies.



Strategic Policy Alignment: Working with government stakeholders to integrate conservation into national development plans and policies.



Public Awareness Campaigns: Developing targeted campaigns that showcase how conservation supports job creation, ecosystem services, and sustainable livelihoods.



Cross-Sector Collaboration: Building partnerships between conservation organisations, private sector stakeholders, and government agencies to ensure a unified approach to environmental protection.

This initiative is designed for conservation organisations, government agencies, and stakeholders seeking to elevate the role of conservation in national and regional policy agendas.

Alinea's approach to strategic communications is centred on long-term impact. By strengthening the voices of conservation organisations and ensuring that policymakers recognise conservation's broader societal benefits, we foster an environment where conservation is valued, supported, and integrated into sustainable development strategies.



ENSURING PARTNER SECURITY:

Mozambique Wildlife Alliance (MWA)

Alinea's commitment to safety and *Risk mitigation*

AT ALINEA, WE RECOGNISE THAT CONSERVATION AND LAW ENFORCEMENT EFFORTS OFTEN EXPOSE OUR PARTNERS TO VARIOUS SECURITY RISKS. Our commitment to safeguarding our partners is paramount, ensuring that both hard and soft security measures are up to standard.



By leveraging specialised security consultants, we help our partners establish and maintain minimum security standards, mitigating potential threats and ensuring operational resilience.

1. Organisational Security

Alinea ensures that partners actively consider and address security risks that may arise in the course of their work, whether for their teams, communities, or the landscapes they protect. By conducting in-depth security assessments, we identify vulnerabilities in organisational structures and provide tailored recommendations to enhance security protocols.

Our approach includes:



Risk assessments and security audits.



Harm reduction strategies through risk mapping and risk profiling.



Development of emergency response plans.



Training programmes on security awareness and threat mitigation.



Ensuring secure operational procedures for conservation staff.

Alinea's collaborative approach centres on merging best practices with local context to build proactive security cultures and systems with our partners. As every operational environment and partner is different, we focus on ensuring that all security interventions are not only feasible and actionable but also appropriate, ensuring that we empower our partners to operate safely and resiliently in challenging environments.

2. Landscape Security Programme

Alinea offers a dedicated Landscape Security Programme that organisations can request to strengthen security at a regional level. Security concerns in conservation are rarely isolated, often influenced by broader socioeconomic and governance challenges. This programme provides structured support to identify and address security vacuums that enable environmental crime and exploitation.

Through this programme, we offer:



Risk and threat analysis of conservation landscapes.



Support for information flows and collaboration among stakeholders.



Enhanced situational awareness through surveillance and data-driven insights.



Strengthening of partnerships with government agencies and community-based organisations.



Strategic level risk identification to landscapes.



Landscape stakeholder mapping and analysis.



Future threat awareness and Red Team planning to assist long-term risk mitigation.

Organisations can request this programme to ensure their conservation landscapes remain robust and well-protected against evolving security threats.

3. Law Enforcement and Security Capacity Programme

Alinea also offers a Law Enforcement and Security Capacity Programme, which organisations can engage to enhance the effectiveness of conservation law enforcement or community engagement efforts. This programme is designed to assess and improve law enforcement frameworks, engage local communities, counter corruption, and enhance information-sharing mechanisms to combat illegal activities such as poaching, illegal logging, and organised environmental crimes.

Through this programme, Alinea provides:



Baseline law enforcement capacity assessments and improvement plans.



Strengthening of operational integrity and counter-corruption measures.



Development of information-sharing frameworks for wildlife crime interdiction.



Support for the integration of human rights-based approaches into conservation law enforcement efforts.



Strategy development and assistance to address converging and interconnected challenges impacting landscape security.

This programme is available for organisations seeking to improve their law enforcement effectiveness and security management within and in vicinity of conservation areas.

A Forward-Thinking Approach to Conservation Security

Alinea's security support extends beyond immediate risk mitigation. We help our partners develop long-term security frameworks that align with evolving threats, ensuring that conservation landscapes remain protected in the face of changing security dynamics. By fostering collaboration between NGOs, law enforcement agencies, and community stakeholders, we create security solutions that are practical, sustainable, and scalable.

Our commitment to security ensures that conservation organisations and their teams can operate safely and effectively, ultimately strengthening their ability to protect critical ecosystems, wildlife, and communities.



 Patrick Bentley (WCP)



 Patrick Bentley (WCP)

Supporting Female Empowerment

THE BEST PREDICTOR OF A STATE'S STABILITY AND SECURITY IS HOW ITS WOMEN ARE TREATED.

References:  

In many parts of Africa, particularly in rural areas, women continue to face significant barriers to education, economic advancement, and employment opportunities – far more than in other parts of the world.

Addressing these disparities is not just about aligning with global diversity and inclusion efforts; it is about ensuring that women have access to any opportunities at all.

For conservation efforts to be truly sustainable, they must actively invest in the empowerment and security of women – whether through our partners or within the communities we serve. Alinea integrates gender mainstreaming and transformative approaches into supported projects, recognising that the intersectionality of gender issues is deeply tied to broader conservation and development challenges. By building the capacity of women, we strengthen their ability to contribute to and lead solutions that address some of the greatest environmental and societal challenges of our time.

This includes:



Supporting the professional development of 19 up-and-coming women leaders in the sector (across five partners in four countries).



Integrate gender considerations (women and men, boys and girls) into project design at landscape levels, including working towards reducing gender blindness and spreading understanding of gender concepts.



 Mozambique Wildlife Alliance (MWA)



Supporting programmes that address root causes of conservation issues by working towards gender equality and the "triple burden" women face, from supporting to projects that provide economic empowerment for rural women to reducing the sexual exploitation of girls experiencing "period poverty".



Alongside our incredible partners, we ensure that we lead by example, with half of Alinea's senior leadership being women, offering our support to five partners in five challenging countries that are led by women – all creating an amazing impact in their respective communities and landscapes.

Understanding Drivers and Linkages:

Project Safe Passage Socio-Ecological Study

THE SIMPLE ANSWER TO WHY PEOPLE COMMIT ENVIRONMENTAL CRIME IS OFTEN "POVERTY". THE COMPLEX ANSWERS ARE MORE DIFFICULT TO COMPREHEND, HARDER TO ADDRESS, AND ARE THE THINGS THAT NEED THE MOST ATTENTION.

Under Project Safe Passage, Alinea is conducting a socio-ecological study to understand the complex interplay between society and nature in key border areas in western and southern Zambia, which further impact the security and integrity of neighbouring countries and wildlife.

The locations selected all have unique interlinkages between the environment, human populations and are known for significant levels of environmental crime; all within urban, peri-urban and rural areas. This convergence of issues is about more than having "another study", it is focused on identifying and immediately supporting interventions through partners to address unique challenges where the future of wildlife and people hangs in the balance.



 Patrick Bently

Although the study is still on going, key issues identified include:



Weak Governance and Community Frustration: Communities feel abandoned by ineffective governance, with authorities seen as unresponsive to critical challenges like human-wildlife conflict and resource exploitation. Distrust of law enforcement and authorities and divisions in traditional leadership further undermine decision-making. Repeated surveys without tangible results have also deepened frustration and disengagement.



Inadequate Development and Essential Services: Severe shortages of food, water, and infrastructure leave communities struggling to meet basic needs. Drought, human-wildlife conflict, and weak support systems have exacerbated food insecurity, forcing reliance on foraged resources, bushmeat, and other wildlife products. Limited access to clean water and essential services increases hardship, while insufficient aid distribution creates tension. Poor infrastructure and lack of economic opportunities drive internal migration, further destabilising communities.



Dependence on Nature Drives its Destruction With few alternatives for food, income, and protection from wildlife, communities rely heavily on natural resources, accelerating environmental degradation. Deforestation, unsustainable harvesting, and poaching are driven by necessity rather than choice. Exploitation by external traders further depletes resources, while human-wildlife conflict fuels destructive practices. Without viable livelihoods, the cycle of dependence and depletion continues, threatening ecosystems that support people.



 Mozambique Wildlife Alliance (MWA)

The problems identified with just one study can make it seem that nothing can create the impact needed to the scale of the problems. But by implementing targeted projects with grassroots partners living and breathing these challenges, sharing lessons on what works, and fostering multi-sectoral collaboration, we can align development with nature-based solutions. We will continue to strengthen partnerships and invest in approaches that work towards interconnected issues to create pathways for people and ecosystems to thrive.

WHY SOCIO-ECOLOGICAL AND WHAT IS IT?

Socioeconomic approaches focus on financial and material well-being – jobs, income, and markets – but they often overlook the deeper connections between people and their environment. Socio-ecological thinking goes further, recognising that human survival, culture, and livelihoods are directly tied to nature. It's not just about economic opportunity; it's about how ecosystems sustain communities and how human activities, in turn, shape those ecosystems. Ignoring this relationship leads to short-term fixes that fail in the long run – like promoting livelihoods that deplete the very resources people depend on. A socio-ecological lens ensures we don't just count profits and losses but also measure the health of the landscapes, water sources, and biodiversity that underpin long-term stability. If we want real, lasting solutions, we must understand that people and nature are not separate – they are deeply interdependent.

Platform Meetings

Alinea Platform Meetings:

FOSTERING COLLABORATION AND LEARNING

Alinea's annual Platform Meetings serve as a unique and safe space for conservation partners to come together, share experiences, and collectively strengthen their efforts. These annual gatherings provide an opportunity to exchange lessons learned, explore new ideas, and support one another in tackling the complex challenges faced in conservation.

Purpose

The primary aim of the Alinea Platform Meetings is to unite current and potential partners from across Africa, fostering an environment where collaboration and knowledge-sharing can thrive.

The meetings offer:

A safe and open space where participants can freely discuss challenges, successes, and experiences.

A chance to explore innovative approaches to addressing conservation challenges.

Opportunities for cross-organisational learning, helping to strengthen conservation efforts at a landscape level.

The ability to connect and build partnerships that support long-term conservation impact.

Themes and Focus Areas

Each Platform Meeting is structured around a guiding theme that reflects the current needs and aspirations of conservation partners.

1ST PLATFORM MEETING

Stanford, Cape Town

THEME

The Long Game



Inspired by Simon Sinek's principles of endurance and resilience, the first Platform Meeting emphasised the importance of long-term thinking in conservation.

DISCUSSIONS REVOLVED AROUND:

- The role of civil society stewardship in driving positive change.
- Political will and how to align actions with rhetoric.
- The power of effective storytelling in shifting perceptions and driving engagement.
- Addressing incentive misbalances and ensuring positive impacts are celebrated alongside challenges.

2ND PLATFORM MEETING

Hoedspruit, South Africa

THEME

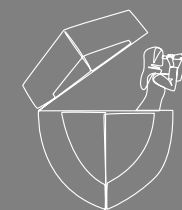
Pivot Points



This meeting focused on critical turning points that shape conservation efforts. Participants reflected on key moments that changed their strategies, challenged their perspectives, or created new opportunities.

TOPICS INCLUDED:

- **Mission Creep vs. Opportunity:** How flexible and fast-moving organisations can adopt new approaches without losing sight of their core mission.
- **Challenges beyond conservation:** Recognising that financial systems, governance, and organisational culture are just as critical as field operations.
- **Understanding donor priorities:** Strengthening relationships with donors by aligning with their strategic goals and ensuring financial sustainability.
- **Collective strength:** Building a collaborative network that supports long-term conservation impact through shared knowledge and best practices.



Looking ahead

As Alinea continues to grow as a regional conservation intermediary, our Platform Meetings will remain a cornerstone of our approach. These gatherings will expand to include more partners, broader geographic representation, and a stronger focus on collaborative impact. Our ultimate goal is to ensure that conservation organisations feel supported, valued, and equipped with the tools needed to navigate an ever-changing landscape.

The power of these meetings lies in the collective wisdom of our partners. By leveraging shared experiences, strengthening networks, and fostering a culture of continuous learning, we can drive meaningful change and build a more resilient conservation sector.

THE POWER OF PLATFORMS

A platform is an intentional space designed to bridge the gap between those directly impacted by an issue and those who can support change. It creates the foundation for learning, collaboration, and high-level engagement while keeping expertise rooted in local realities. Platforms bring together primary actors – such as communities, NGOs, and implementation partners – who hold the knowledge and lived experience. They also engage supporting actors – such as donors, international organisations, and cross-border partners – who can provide influence, resources, and connections.

By incorporating diverse structures and strategies, platforms foster exchanges across regions, ensuring that solutions reflect the complexity of social, environmental, and economic challenges. They enable more responsive, inclusive systems that adapt to changing conditions while remaining grounded in local needs. Most importantly, platforms shift decision-making and resources into the hands of those with direct experience, making interventions more effective, equitable, and sustainable.

LOOKING FORWARD: ALINEA'S PRIORITIES FOR 2025 AND BEYOND

As Alinea continues to evolve as an intermediary in conservation, our focus for 2025 and beyond is shaped by the urgent need for systemic change, strengthened governance, and sustainable solutions to counter environmental crime through our partners.

Our strategic direction is built around the following priorities:

1. REVOLUTIONISING THE ROLE OF INTERMEDIARIES

Setting new benchmarks for intermediary organisations by ensuring that our resources, strategies, and support mechanisms empower grassroots organisations for long-term resilience and sustainability.

Enhancing financial and technical support structures to enable conservation organisations to operate effectively despite financial, security, and capacity constraints.

2. STRENGTHENING GRASSROOTS CAPACITY AND IMPACT

Expanding technical and financial support to frontline organisations combating environmental crime, securing vulnerable ecosystems, and driving sustainable development.

Providing hands-on capacity-building, mentorship, and operational support to grassroots conservation initiatives to ensure long-term effectiveness.

3. DRIVING SYSTEMIC CHANGE IN CONSERVATION

Strengthening legal frameworks, information-led enforcement, and financial crime investigations to disrupt the economic drivers of environmental crime, ensuring greater accountability and deterrence.

Prioritising systems-based approaches to enhance environmental, social, and economic outcomes by recognising and harnessing the deep interconnections between nature, society, and development.

4. ENHANCING MULTI-STAKEHOLDER COLLABORATION

Strengthening partnerships across government, civil society, and the private sector to facilitate knowledge-sharing and coordinated responses to conservation challenges.

Establishing new funding models that bring diverse stakeholders into conservation financing, including sustainable investments and nature-based economic solutions.

5. INNOVATING THROUGH RESEARCH AND TECHNOLOGY

Integrating cutting-edge research, data analytics, and conservation technology to support evidence-based decision-making.

Expanding the use of Earth Ranger, Cortex Edge, and other technological tools to improve information-led enforcement and conservation impact assessment.

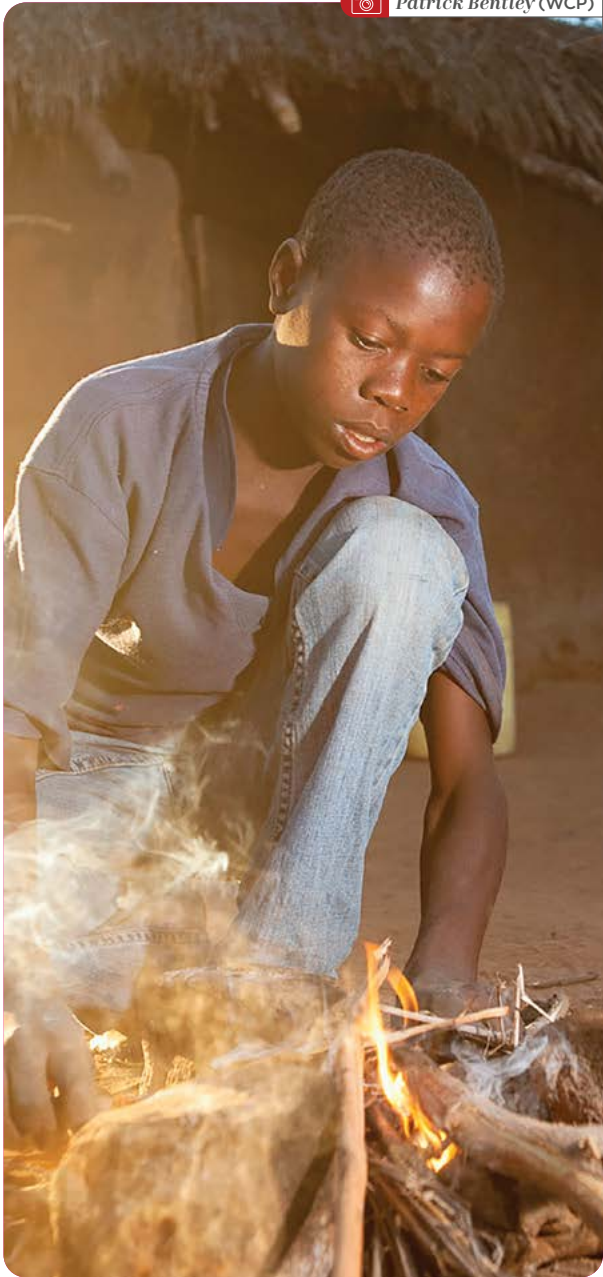
6. ENSURING ORGANISATIONAL EXCELLENCE AND SUSTAINABILITY

Strengthening Alinea's operational resilience by enhancing governance, financial sustainability, and strategic oversight.

Securing long-term funding streams to ensure sustained support for our partners and their conservation efforts.

By aligning these priorities with our core mission, Alinea is not only addressing immediate conservation challenges but also laying the foundation for a future where conservation is embedded in governance, economic resilience, and community well-being. Our commitment remains unwavering: to empower grassroots organisations, disrupt environmental crime networks, and drive sustainable conservation impact across Africa.

Patrick Bentley (WCP)





Appreciation

Alinea's success is only as strong as the success of our partners. We measure our impact by theirs, and we are deeply grateful to all those who make our work possible.

A special thank you to Oak Foundation, whose unwavering support ensures that Alinea is capacitated and equipped to assist our incredible partners. Their belief in not only Alinea's model but also in the transformative impact of grassroots organisations has been instrumental in driving real change.

We extend our gratitude to the Swedish International Development Cooperation Agency (Sida) for their support through WCP, recognising the role of grassroots organisations in the broader fight against illegal trade. Their insight and strategic vision continue to amplify the work of those on the frontlines of conservation.

To the U.S. Department of State Bureau of International Narcotics and Law Enforcement Affairs (INL) supporting through WCP, we appreciate your understanding of transnational organised crime and the complexity of addressing it at a global scale. Your commitment to strengthening security and governance in conservation landscapes is invaluable.

Our sincere thanks to the Paul G. Allen Family Foundation for championing the importance of data collection and analysis through WCP. Your investment in ensuring that conservation efforts are informed by strong data-driven strategies has been crucial in driving measurable impact.

We deeply value the Wildlife Conservation Network (WCN) and their programmes Rhino Recovery Fund, Pangolin Crisis Fund, Lion Recovery Fund and Elephant Crisis Fund for their support to our partners through WCP – not just through funding but also by supporting their growth and development. Your willingness to take on some of the most challenging and complex conservation landscapes across Africa alongside us is truly commendable.

To our technical partners, including EarthRanger, thank you for providing essential tools that help protected areas and conservation organisations monitor their people, assets, and wildlife effectively. Your innovative solutions continue to enhance conservation efforts worldwide.

A heartfelt appreciation to Semantic AI for your many years of support in bringing critical technology through Cortex Edge, enabling NGOs and government institutions across Africa, South America, and North America to track and disrupt criminal networks through cutting-edge data analysis.

 Patrick Bentley (WCP)

Most importantly, we extend our deepest gratitude to our partner organisations on the ground. Your dedication, resilience, and ability to adapt to ever-changing challenges ensure lasting impact. The work you do is extraordinary, and we are honored to support and work with you.

Finally, to our Alinea team, thank you for your passion, belief in the organisations we support, and unwavering drive to help them achieve their goals, grow, and increase their impact. And to our strategic committee, we are grateful for your guidance, ideas, knowledge and continuous push for us to be better. Your individual contributions to conservation and global sustainability inspire us all.

Together, we are making a difference. Thank you for being part of this journey.

For more information on Alinea and our work, please feel free to reach out via admin@alinea.network.




 Mozambique Wildlife Alliance (MWA)



 Patrick Bentley (WCP)



 Patrick Bentley (WCP)



 Patrick Bentley (WCP)



 Alinea



 Patrick Bentley (WCP)



 Patrick Bentley (WCP)



 Patrick Bentley (WCP)



 Patrick Bentley (WCP)

91
ALINEA

A NEW TRAIN OF THOUGHT

